

BECKERS ANGUS

Genetics You Can Count On

Annual Bull and Female Production Sale



Saturday, March 9, 2024, 1 P.M.

At the Farm, Askov, Minnesota



Dave and Rose Becker with their thirteen grandchildren at the 2022 Sale.

BECKERS ANGUS

Dave & Rose Becker
Brian & Rebecca Becker
38763 Rutabaga Rd., Askov, MN 55704
Home: (320) 838-3162
Dave Becker: (320) 216-5029
beckersangus@frontiernet.net
WWW.BECKERSANGUS.COM

Welcome to our third annual bull and female sale!

It has been a heck of a year. This is our third year of drought. Last year it was a small pocket just around our small town of Askov, and this year many of you faced the same experience along with a good portion of the state. We fed hay on and off all summer, then in the fall we had 10 inches of rain in a short amount of time that turned into a muddy mess, making it impossible to keep the cattle clean in the paddocks. We went through a lot of bedding this year. Hopefully this year will be better.

Overcoming those challenges, you will find in our 25th year of AI breeding that we have fewer bulls due to having a very high percentage of heifers born. But, nothing short on quality, it's our best group we've had! Consequently, we are offering some really elite heifers in this sale. The heifers were on mommas' milk until weaned and then on high roughage diet. The bulls did not start eating any supplemental feed until about 45 days before weaning, then they were placed on a high roughage diet, too. The fall yearling bulls were developed in a large paddock with just hay all summer then placed with the spring yearlings in the fall. All bulls and heifers have been Genomic and Parentage tested using AngusGS. This allows for higher accuracy on EPD numbers, giving you more confidence on evaluating and selecting cattle for your program. We always strive for quality over quantity. That shows through the embryo work done and pedigree offered. Concluding, it's truly is all about the cow. We encourage you to come and take a look at them. You will not be disappointed with the depth of quality we have to offer for an affordable price – quality genetics you can count on.

We welcome the opportunity to visit with you and answer any questions you might have. Pictures and videos are on our website beckersangus.com and on LiveAuctions.TV, also. Please join us in a complimentary lunch at 11AM with cattle viewing starting at 9 AM. Auction starts at 1PM! If you would like further information about our sale offering, feel free to contact us anytime.

Thank you,

*Dave Becker
(320) 216 5029*



Granddaughter Natalie

BECKERS ANGUS

SALE DAY PHONES:

Tom Burke (816) 853-2697 • Alex Popplewell (270) 566-8822
Dave Becker (320) 216-5029

AUCTIONEER:

Alex Popplewell
(270) 566-8822

SALE MANAGER:

American Angus Hall of Fame (816) 532-0811
Tom Burke Kurt Schaff Alex Popplewell
(816) 853-2697 (816) 520-6447 (270) 566-8822

Buyers unable to attend the sale may send their bids to the sale manager, regional manager, field representatives or auctioneer.

REPRESENTATIVES:

Ron Hinrichsen, *The Stockman* (785) 770-0222
Doug Ward, *American Cattleman* (507) 273-7465

DIRECTIONS:

38763 Rutabaga Rd, Askov, MN
I-35 exit 195. Go east on truck Hwy 23, 5 miles to Askov, turn east on County Road 32 (Rutabaga Road), 2 miles on the north side of road.

SEMEN TESTING: All bulls will have passed a breeding soundness exam before sale day. Scrotal measurements will be available the week of the sale.

RETAINING SEMEN INTEREST: Beckers Angus reserves the right to retain 1/3 revenue sharing interest in any of the bulls selling. Buyer gets 100% possession, 100% salvage value and 2/3 semen revenue interest.

EPDS: A full explanation of Angus EPDs can be found at <http://angus.org/Nce/Definitions.aspx>. All yearling weights have not yet been submitted, so yearling weights EPDs may change slightly before the sale. Updated EPDs available on our website and on sale day. You can look up individual bulls and heifers by clicking the pedigree that is linked to the Angus Association under sales on website, beckersangus.com. Arbitrary EPD levels determine inclusion of CAB logo with some lots.

GENOMICS: Bulls and heifers were genomically profiled using Angus GeneSeek test. Genomics are used to improve accuracy of EPDs and to get the full set of EPDs. They were also parent verified.

SUPPLEMENTAL INFORMATION: Sale supplement sheets will be posted on beckerangus.com a few days before the sale. They will include current weights, scrotal measurements, updated EPDs and other announcements.

BOARDING ARRANGEMENTS AND TRUCKING: We will not be responsible for injured livestock if they are left with us: you do so at your own risk. We encourage you to take out a livestock policy on your sale purchases. Free delivery on bulls up to 300 miles, after April 23 there will be a \$5.00 per day, per bull charge. Haul your bull home sale day and you will receive a \$50.00 credit per bull. Females must be picked up within one week from auction.

FOOD AND REFRESHMENTS: A complimentary lunch will start at 11:00 am.

Annual Bull and Female Production Sale

Saturday, March 9, 2024

at the Farm, Askov, Minnesota

TERMS: Cattle will sell under the terms and conditions as recommended by the American Angus Association.

SETTLEMENT: Payments for bulls and heifers purchased at the sale must be made sale day, unless prior arrangements were made. Registration papers will not be transferred to your member code until payment is received.

LIABILITY: All persons attending the sale do so at their own risk and without liability on the part of the Beckers Angus Ranch.

INSPECTION: Cattle are available for inspection at the ranch prior to sale day. Feel free to stop by any time.

BIDS: If unable to attend the sale, bids can be given to any of the sale representatives, auctioneer, fieldman or online at LiveAuctions.TV. Please register to bid at least the day before the auction if you are going to bid online.

ADDED PERFORMANCE: Scrotal circumference 365-day adjusted, actual weight will be on our website at beckersangus.com a week before the auction.

HEALTH: All sale bulls and heifers post weaning Ultrabac 8, Prespense and Valbazen, January Ivermectin in March another dose of Ultrabac 8.

ANNOUNCEMENTS: Announcements sale day takes precedence over printed material.

LIVESTOCK MORTALITY INSURANCE: Jim Bessler of James F Bessler, LLC will be available to assist with mortality insurance at the buyer's option. (815) 762-2641.

SALE BOOK PREPARED BY: Tom Burke, Kurt Schaff, Alex Popplewell, American Angus Hall of Fame, at the World Angus Headquarters, PO Box 660, Smithville, MO 64089-0660. Phone: (816) 532-0811, Fax: (816) 532-0851. E-Mail: angushall@angushall.com. Website: www.angushall.com.



LiveAuctions.TV

Auction will be held in a heated building by video, the cattle can be viewed outside. Real-time bidding available via the Internet for this sale. Live audio and live video will allow buyers to bid on animals just as if they were present at the sale. Buyers must create an account and request a buyer number. Instructions are available to walk you through the account set-up process. Web address: www.liveauctions.tv. E-mail address: margo@liveauctions.tv. Contact: Margo Paeltz-Schmerge at 937-515-1194.

ANGUS MEDIA: EPDs contained in the hard copy of this sale book were current as of print date. Digital versions of this sale book can be viewed online at www.angus.org and will have EPDs updated every Friday with the exception of EPD references in footnotes and photos. Any PDF downloads from the website will contain EPDs current as of the date downloaded. References: American Angus Association®, AHIR®, AngusLinkSM, CAB®, Pathfinder®.

SALE MANAGER COMMENTS

BECKERS ANGUS PRODUCTION SALE

We would like to extend an invitation on behalf of the American Angus Hall of Fame to join us at Becker's Angus Production Sale. The combination of top-notch genetics and phenotype makes Becker Angus one of the best in America. Every year, Dave and his family take great pride in breeding and presenting their Angus genetics to buyers nationwide. We believe that this is the strongest offering Becker Angus has ever presented in the history of their program.

The cattle industry is currently experiencing significant growth, and profit margins are increasing day by day. As a result, Angus genetics have become the go-to choice for high-performance Angus bulls and maternal cow power. If you're in search of these qualities, we invite you to join us in Askov, Minnesota on Saturday, March 9, 2024. We are confident that you'll find what you are looking for. We are eagerly looking forward to seeing you on sale day. If you need any assistance, please do not hesitate to contact us at the American Angus Hall of Fame. We are always ready to serve you.

Sincerely,



Tom Burke

Tom Burke
(816) 853-2697



Kurt Schaff

Kurt Schaff
(816) 520-6447



Alex Popplewell

Alex Popplewell
(270) 566-8822





Beckers Stunner 2280 – Lot 1

1 **Beckers Stunner 2280**
BECKERS ANGUS **DOB:** 08-29-2022 **Reg. No:** 20750036 Bull **Tattoo:** 2280

*Musgrave 316 Stunner #+*LD Capitalist 316
BECKERS STUNNER 1901 #MCATL Blackbird 831-1378
 19625390 #Beckers Royal Lady 1705 #+*Coleman Charlo 0256

#*Barstow Cash
BECKERS ELBA 1814 Beckers Royal Lady A11
 19097827 Beckers Elba 1429 SAR BIS Alliance 102
 Beckers Elba 1208

ANGUS GS
 Powered by Angus OneSource

BW **70**
 ADJ. 205 **735**

CED	BW	WW	YW	MILK	CW	MARB	RE	\$M	\$W	\$B	\$C
+9	-.3	+67	+116	+28	+50	+58	+76	+47	+67	+141	+230

- This Fall bull is a powerhouse, calving ease, performance, and maternal. Keep his daughters! Hard to find this kind of bull with his power, capacity, muscle in a calving ease package. A must see on sale day.



Beckers Stunner 2276 – Lot 2

2 **Beckers Stunner 2276**
BECKERS ANGUS **DOB:** 08-15-2022 **Reg. No:** 20750033 Bull **Tattoo:** 2276

*Musgrave 316 Stunner #+*LD Capitalist 316
BECKERS STUNNER 1901 #MCATL Blackbird 831-1378
 19625390 #Beckers Royal Lady 1705 #+*Coleman Charlo 0256

Beckers Royal Lady A11
 Beckers Respect 1710 #+*S AV Renown 3439
BECKERS PRIMROSE 1936 +S AV May 1408
 19617520 +*Musgrave Primrose 1720 *Connealy Greeley
 *MCATL Primrose 1021-7861

ANGUS GS
 Powered by Angus OneSource

BW **85**
 ADJ. 205 **711**

CED	BW	WW	YW	MILK	CW	MARB	RE	\$M	\$W	\$B	\$C
+2	+3.5	+77	+126	+21	+51	+42	+91	+49	+66	+140	+231

- Nice looking Fall bull, deep body, easier keeping, and low energy type. Performance top 15% WW, 30% YW, top 5% for Scrotal. Maternal strengths with Beckers Stunner on the top and the Musgrave Primrose on the bottom. It's a win-win!

3 **Beckers Stunner 2278**
BECKERS ANGUS **DOB:** 08-27-2022 **Reg. No:** 20750034 Bull **Tattoo:** 2278

*Musgrave 316 Stunner #+*LD Capitalist 316
BECKERS STUNNER 1901 #MCATL Blackbird 831-1378
 19625390 #Beckers Royal Lady 1705 #+*Coleman Charlo 0256

+*S AV 14 Speed #*S AV Ten Speed 3022
BECKERS RACHEL 2049 +Champion Hill May 6956
 19971684 Beckers Rachel 1726 Beckers Real Cash 1517
 #Beckers Rachel C41

ANGUS GS
 Powered by Angus OneSource

BW **83**
 ADJ. 205 **611**

CED	BW	WW	YW	MILK	CW	MARB	RE	\$M	\$W	\$B	\$C
+0	+4.1	+70	+124	+17	+46	+24	+76	+47	+51	+129	+214

- Performance in the top 30% WW and YW. Maternal Beckers Stunner 1901 has made some nice cows for us with SAV on the bottom. Should be a good one!



Beckers Achievement 2313 – Lot 6

4

BECKERS ANGUS

Beckers Stunner 2282

DOB: 09-16-2022 **Reg. No:** 20818763 Bull **Tattoo:** 2282

BECKERS STUNNER 1901
19625390

BECKERS ROSE 2022
19802075

ANGUS GS
Powered by **Hygen Genetics**

BW	60
ADJ. 205	717

CED	BW	WW	YW	MILK	CW	MARB	RE	\$M	\$W	\$B	\$C
+11	-.4	+64	+108	+43	+66	+62	+69	+67	+79	+156	+269

- Double-digit calving ease, moderate growth, maternal, in a moderate frame with Beckers Stunner 1901 on top and a first calf heifer that has 6 straight generations of top AI sires. BW 1@87, WW 1@107.

5

BECKERS ANGUS

Beckers Stunner 2279

DOB: 08-29-2022 **Reg. No:** 20750035 Bull **Tattoo:** 2279

BECKERS STUNNER 1901
19625390

+*S A V MAY 1808
19114041

ANGUS GS
Powered by **Hygen Genetics**

BW	70
ADJ. 205	571

CED	BW	WW	YW	MILK	CW	MARB	RE	\$M	\$W	\$B	\$C
-1	+4.0	+60	+102	+24	+53	+69	+93	+60	+54	+161	+269

- Carcass CAB logo, maternal, moderate frame, low energy, and big ribeye. With Beckers Stunner 1901 on top and an ET SAV May cow family on the bottom, should make good cows.

6

BECKERS ANGUS

Beckers Achievement 2313

DOB: 01-18-2023 **Reg. No:** 20721066 Bull **Tattoo:** 2313

***SITZ ACCOMPLISHMENT 720F**
19078208

BECKERS JAMIE 2008
19849991

ANGUS GS
Powered by **Hygen Genetics**

BW	81
ADJ. 205	781

CED	BW	WW	YW	MILK	CW	MARB	RE	\$M	\$W	\$B	\$C
+6	+1.9	+81	+139	+24	+57	+58	+68	+69	+71	+134	+243

- This guy has always caught my eye since he was a small calf. He is well-balanced, loads of muscle, performance WW top 10%, YW 15%, bull that should add pounds. His BW is moderate, and he has three straight generations of calving ease sires, that should be good on larger-framed heifers. He will add maternal strengths as well top 35% \$M. Had adjusted 205-day weight at 781 lbs., ratio 110 out of a three-year-old Stunner cow that has WW 2@108, YW 1@104. Check this guy out sale day!

7

BECKERS ANGUS

Beckers Achievement 2322

DOB: 01-22-2023 **Reg. No:** 20721071 Bull **Tattoo:** 2322

***SITZ ACCOMPLISHMENT 720F**
19078208

BECKERS ELBA 1930
19617517

ANGUS GS
Powered by **Hygen Genetics**

BW	68
ADJ. 205	736

CED	BW	WW	YW	MILK	CW	MARB	RE	\$M	\$W	\$B	\$C
+14	-1.8	+56	+105	+22	+42	+13	+31	+62	+55	+106	+199

- Double-digit calving ease with moderate growth and frame Accomplishment son. ADG WW 736 lbs., WW ratio 104. Dam's production BR 3@94, WR 3@ 104.

Beckers Angus Bulls



Becker Growth Fund 2309 – Lot 8

8 **Beckers Growth Fund 2309**
DOB: 01-17-2023 **Reg. No:** *20721064 **Bull** **Tattoo:** 2309

BECKERS ANGUS #+*Basin Payweight 1682 #+*Basin Payweight 006S
+*DEER VALLEY GROWTH FUND 21AR O Lass 7017
 18827828 #+*Deer Valley Rita 36113 #*Plattemere Weigh Up K360
 +*Deer Valley Rita 9457

+*BEAR MTN JAMIE 1804 *WK George
 19275757 #S A Neutron 377
 +*Bear Mtn Jamie 4101 Bear MTN Jamie 512

ANGUS Powered by Wageningen UR
 BW 91
 ADJ. 205 719

CED	BW	WW	YW	MILK	CW	MARB	RE	\$M	\$W	\$B	\$C
-1	+3.3	+91	+161	+25	+65	+36	+78	+59	+73	+142	+243

- Performance-bred Growth Fund son in the top 2% for WW and YW, 10% for RADG. He shines if you are selling calves at weaning and are finishing them. He should add maternal strength as well in the top 65% for \$M. Back to an ET Bear Mountain cow with production record BW 4@90, WW4@102, and YW 2 @100.

9 **Beckers Growth Fund 2315**
DOB: 01-19-2023 **Reg. No:** 20721067 **Bull** **Tattoo:** 2315

BECKERS ANGUS #+*Basin Payweight 1682 #+*Basin Payweight 006S
+*DEER VALLEY GROWTH FUND 21AR O Lass 7017
 18827828 #+*Deer Valley Rita 36113 #*Plattemere Weigh Up K360
 +*Deer Valley Rita 9457

BECKERS LUE ANN 2011 *Connealy Final Product
 19802073 #Ebonista of Conanqa 471
 Beckers Lou Ann 1204 #Connealy Thunder
 Beckers Lou Ann C500

ANGUS Powered by Wageningen UR
 BW 61
 ADJ. 205 656

CED	BW	WW	YW	MILK	CW	MARB	RE	\$M	\$W	\$B	\$C
+17	-2.6	+70	+120	+31	+49	+81	+62	+90	+81	+145	+278

- Growth Fund son that is sleep all-night, double-digit calving ease, and he will add performance top 30% WW with 40% YW. Will add maternal value as well top 3% \$M and carcass value CAB logo. Lots of boxes checked on him. He is in the top 35% or higher on 15 traits.

10 **Beckers Growth Fund 2339**
DOB: 02-04-2023 **Reg. No:** *20721081 **Bull** **Tattoo:** 2339

BECKERS ANGUS #+*Basin Payweight 1682 #+*Basin Payweight 006S
+*DEER VALLEY GROWTH FUND 21AR O Lass 7017
 18827828 #+*Deer Valley Rita 36113 #*Plattemere Weigh Up K360
 +*Deer Valley Rita 9457

+*BEAR MTN JAMIE 1810 *WK George
 19114045 #S A Neutron 377
 +*Bear Mtn Jamie 4101 Bear MTN Jamie 512

ANGUS Powered by Wageningen UR
 BW 85
 ADJ. 205 703

CED	BW	WW	YW	MILK	CW	MARB	RE	\$M	\$W	\$B	\$C
+6	+1.4	+74	+132	+17	+45	+56	+76	+54	+60	+140	+236

- Moderate birth rate Growth Fund son with performance top 25% WW and 20% YW. Back to an ET Bear Mountain bred cow with production BW 4@90, WW 4@98, YW 2@101.



Beckers Resiliency 2316 – Lot 11

11 **Beckers Resiliency 2316**
DOB: 01-19-2023 **Reg. No:** *20721875 **Bull** **Tattoo:** 2316

BECKERS ANGUS #*Sitz Stellar 726D #*Mohren Substantial 272
***SITZ RESILIENT 10208** *SITZ Pride 200B
 19057457 *Sitz Miss Burgess 1856 #*Sitz Top Game 561X
 #*S AV Final Answer 0035

BECKERS LOU ANN 1609 #Vin-Mar O'Reilly Factor
 18492921 Beckers Lou Ann 1326 #*Sitz Miss Burgess 4381
 #*Sitz Top Game 561X
 #*S AV Final Answer 0035

#*Sitz Top Game 561X
 #*Sitz Miss Burgess 4381
 #*S AV Final Answer 0035
 #*Sitz Top Game 561X
 #*Sitz Miss Burgess 4381
 #*S AV Final Answer 0035
 #*Sitz Top Game 561X
 #*Sitz Miss Burgess 4381
 #*S AV Final Answer 0035

ANGUS Powered by Wageningen UR
 BW 75
 ADJ. 205 713

CED	BW	WW	YW	MILK	CW	MARB	RE	\$M	\$W	\$B	\$C
+10	-1.1	+74	+115	+36	+43	+62	+30	+101	+91	+121	+258

- Another double-digit, sleep-all-night calving ease Sitz Resilient son with growth top 25% WW and maternal strengths top 1% for \$M. Not bad out of a first calf heifer.

12 **Beckers Emerald 2308**
DOB: 01-16-2023 **Reg. No:** *20847194 **Bull** **Tattoo:** 2308

BECKERS ANGUS #*Connealy Confidence Plus #*Connealy Confidence 0100
***CONNEALY EMERALD** Elbanna of Conanqa 1209
 19257149 Jace of Conanqa 6571 #*Connealy Armory
 +Jazzy of Conanqa 4660 860C

BECKERS ELBA 2114 #+*LD Capitalist 316 #*Connealy Capitalist 028
 20130322 Beckers Elba 1310 LD Dixie Erica 2053
 #*Hoover Dam
 Chanhassen Elba of 7031

ANGUS Powered by Wageningen UR
 BW 73
 ADJ. 205 655

CED	BW	WW	YW	MILK	CW	MARB	RE	\$M	\$W	\$B	\$C
+6	+1.6	+60	+105	+14	+42	+69	+66	+70	+48	+145	+258

- Moderate for calving and weaning, he has three generations of AI calving ease sires in his pedigree. Should be good for larger framed and calving ease heifers. He should be a cow maker with LD Capitalist 316 and Hoover Dam on the bottom side. He also has the CAB label for carcass strengths, and is out of a first calf heifer.

13 **Beckers Emerald 2328**
DOB: 02-25-2023 **Reg. No:** 20721075 **Bull** **Tattoo:** 2328

BECKERS ANGUS #*Connealy Confidence Plus #*Connealy Confidence 0100
***CONNEALY EMERALD** Elbanna of Conanqa 1209
 19257149 Jace of Conanqa 6571 #*Connealy Armory
 +Jazzy of Conanqa 4660 860C

BECKERS ROSE 1926 Beckers Respect 1710 #+*S AV Renown 3439
 19617513 Beckers Charly 1702 #S AV May 1408
 #+*Coleman Charlo 0256
 Beckers Rose 1419

ANGUS Powered by Wageningen UR
 BW 80
 ADJ. 205 678

CED	BW	WW	YW	MILK	CW	MARB	RE	\$M	\$W	\$B	\$C
+9	+3	+53	+93	+22	+30	+69	+86	+75	+55	+135	+250

- Calving ease with carcass strengths, CAB logo, moderate-framed Emerald son. Dam's production WW 2@102, YR 1@100.



Beckers Rangland 2325 – Lot 14

14 **Beckers Rangland 2325**
BECKERS ANGUS **DOB:** 01-23-2023 **Reg. No:** *20721074 Bull **Tattoo:** 2325

*Basin Rainmaker 4404 Basin Rainmaker 2704
 +*Basin Joy 1036 +*Basin Joy 1036
***ELLINGSON RANGELAND** #*CTS Remedy 1T01
 19590500 *EA Emblynette 7009 EA Emblynette 5241

Beckers Product 1302 #*Connealy Final Product
BECKERS LOU ANN 1514 #Beckers Rachel C41
 18088835 Beckers Lou Ann 1326 SAR BIS Alliance 102
 Beckers Lou Ann 11

ANGUS
Powered by Weigert Genetics

BW 76
 ADJ. 205 845

CED	BW	WW	YW	MILK	CW	MARB	RE	\$M	\$W	\$B	\$C
+3	+1.3	+85	+145	+27	+59	+39	+39	+78	+79	+132	+249

- Here is a powerhouse Rangland son with top 5% for WW and 10% for YW. He should not only add pounds to your calf crop, but you will also want to keep his daughters as he is in the top 15% for \$M and 2% for Heifer Progeny (HP). His BW is moderate. Adj. WW 845 lbs., and WW ratio 119. Dam's production BR 4@97, WR 4@101, YR 3@100.

15 **Beckers Rangland 2326**
BECKERS ANGUS **DOB:** 01-23-2023 **Reg. No:** 20721073 Bull **Tattoo:** 2326

*Basin Rainmaker 4404 Basin Rainmaker 2704
 +*Basin Joy 1036 +*Basin Joy 1036
***ELLINGSON RANGELAND** #*CTS Remedy 1T01
 19590500 *EA Emblynette 7009 EA Emblynette 5241

+*S AV 14 Speed #*S AV Ten Speed 3022
BECKERS PRIMROSE 2034 +Champion Hill May 6956
 19849992 +*Musgrave Primrose 1723 *Connealy Greeley
 *MCA TL Primrose 1021-7861

ANGUS
Powered by Weigert Genetics

BW 85
 ADJ. 205 698

CED	BW	WW	YW	MILK	CW	MARB	RE	\$M	\$W	\$B	\$C
+1	+2.6	+65	+117	+27	+53	+44	+42	+66	+59	+139	+246

- This guy is bred for both maternal and performance with top and bottom side of pedigree with Ellingson, SAV, and Musgrave. You can't go wrong! Dam's production WR 2@104, YR 1@104.



Beckers Rangland 2326 – Lot 15



Beckers Rangland 2305 – Lot 16

16 **Beckers Rangland 2305**
BECKERS ANGUS **DOB:** 01-15-2023 **Reg. No:** *20721061 Bull **Tattoo:** 2305

*Basin Rainmaker 4404 Basin Rainmaker 2704
 +*Basin Joy 1036 +*Basin Joy 1036
***ELLINGSON RANGELAND** #*CTS Remedy 1T01
 19590500 *EA Emblynette 7009 EA Emblynette 5241

#*Coleman Charlo 0256 #*O C C Paxton 730P
***BECKERS ELBA 1801** +Bohi Abique 6014
 19097819 Beckers Elba 1606 #*Connealy Black Granite
 Beckers Elba 1404

ANGUS
Powered by Weigert Genetics

BW 67
 ADJ. 205 704

CED	BW	WW	YW	MILK	CW	MARB	RE	\$M	\$W	\$B	\$C
+14	-1.8	+51	+92	+39	+25	+25	+44	+81	+67	+92	+200

- Here is a moderate framed, double-digit, sleep-all-night, calving ease Rangland son with five generations of AI sires. He is bred for maternal strengths as well.

17 **Beckers Rangland 2329**
BECKERS ANGUS **DOB:** 01-26-2023 **Reg. No:** *20721076 Bull **Tattoo:** 2329

*Basin Rainmaker 4404 Basin Rainmaker 2704
 +*Basin Joy 1036 +*Basin Joy 1036
***ELLINGSON RANGELAND** #*CTS Remedy 1T01
 19590500 *EA Emblynette 7009 EA Emblynette 5241

#*HA Cowboy Up 5405 #*HA Outside 3008
BECKERS MISS COUNTESS 1824 #*HA Blackcap Lady 1602
 19097831 Beckers Miss Countess 1312 #*Hoover Dam
 Beckers Miss Countess A 246

ANGUS
Powered by Weigert Genetics

BW 78
 ADJ. 205 737

CED	BW	WW	YW	MILK	CW	MARB	RE	\$M	\$W	\$B	\$C
+12	-1.1	+73	+126	+32	+56	+67	+71	+66	+77	+149	+259

- Another nice double-digit, Calving Ease top 10% Rangland son. Performance WW top 25%, YW 30%, with maternal strengths top 15% HP and Milk. Adj. WW 737 lbs. His dam's production WR 2@101.



Beckers Rangland 2329 – Lot 17

Beckers Angus Bulls



Beckers Jumbo 2332 – Lot 20

18 **Beckers Rangland 2331**
DOB: 01-27-2023 **Reg. No.:** *20721077 **Bull** **Tattoo:** 2331

BECKERS ANGUS *Basin Rainmaker 4404 Basin Rainmaker 2704
 *ELLINGSON RANGELAND +*Basin Joy 1036 +*Basin Joy 1036
 19590500 *EA Emblynette 7009 #*CTS Remedy 1T01
 #*Connealy Capitalist 316 EA Emblynette 5241
 #*BECKERS RACHEL 2105 #*Connealy Capitalist 028
 20130323 Beckers Rachel 1812 LD Dixie Erica 2053
 #*+*PVF Insight 0129
 #Beckers Rachel C41

ANGUS GS
 BW 76
 ADJ. 205 702

CED	BW	WW	YW	MILK	CW	MARB	RE	\$M	\$W	\$B	\$C
-1	+5.5	+85	+145	+27	+81	+52	+90	+77	+68	+181	+312

• This Rangland son is out of a Capitalist 316 first calf heifer. His genomics test rates him in the top 5% of the breed for WW and 10% for YW. Claw 3%, Angle 15%, and he will add maternal value as well top 20% \$M. Adj. WW 702 lbs., WR 107.

19 **Beckers Jumbo 2335**
DOB: 01-28-2023 **Reg. No.:** *20721079 **Bull** **Tattoo:** 2335

BECKERS ANGUS *Musgrave 316 Colossal 137 #*+*LD Capitalist 316
 *MUSGRAVE JUMBO #*Musgrave Lady Barbara 545
 19436794 Musgrave MO Barbara 947 *Bruns Blaster
 #*Connealy Black Granite Musgrave MO Barbara 644-487
 #*MUSGRAVE BLACKCAP 1719 #*Connealy Consensus 7229
 18773605 +MCA TL Blackcap 070-4132 #Eura Elqa of Conanqa 9109
 #*+*H S A F Bando 1961
 +Hoff Miss Traveler 735

ANGUS GS
 BW 87
 ADJ. 205 725

CED	BW	WW	YW	MILK	CW	MARB	RE	\$M	\$W	\$B	\$C
+15	-1.1	+56	+104	+34	+42	+89	+13	+77	+65	+144	+264

• Another double-digit calving ease with carcass strengths, CAB logo, and maternal strengths. This Musgrave bred top and bottom Jumbo bull calves goes back five straight generations of AI sires. His dam is an ET Musgrave cow, keep all of his heifers. Adj. WW 725 lbs., WR 102. His dam's production BW 5@98, WW 4@101, YW 1@104.



Beckers Jumbo 2335 – Lot 19

20 **Beckers Jumbo 2332**
DOB: 01-27-2023 **Reg. No.:** 20721078 **Bull** **Tattoo:** 2332

BECKERS ANGUS *Musgrave 316 Colossal 137 #*+*LD Capitalist 316
 *MUSGRAVE JUMBO #*Musgrave Lady Barbara 545
 19436794 Musgrave MO Barbara 947 *Bruns Blaster
 #*S AV 14 Speed Musgrave MO Barbara 644-487
 #*S AV Ten Speed 3022
 +Champion Hill May 6956
 Beckers New Freedom B 50 8
 Beckers Miss Countess A 246

ANGUS GS
 BW 81
 ADJ. 205 752

CED	BW	WW	YW	MILK	CW	MARB	RE	\$M	\$W	\$B	\$C
+4	+3.2	+80	+131	+28	+57	+12	+72	+44	+69	+124	+205

• This deep bodied, high-capacity Jumbo son has performance top 10% WW, 20% YW, and maternal strengths, as well his Docility is in the top 5%. Adj WW 752 lbs. Young dams' production WW 2@ 105, YW 1@ 107.

21 **Beckers Jumbo 2318**
DOB: 01-20-2023 **Reg. No.:** *20721068 **Bull** **Tattoo:** 2318

BECKERS ANGUS *Musgrave 316 Colossal 137 #*+*LD Capitalist 316
 *MUSGRAVE JUMBO #*Musgrave Lady Barbara 545
 19436794 Musgrave MO Barbara 947 *Bruns Blaster
 Beckers Sky Kinq 1910 Musgrave MO Barbara 644-487
 *Musgrave Sky High 1535
 +S AV Blackcap May 1407
 Beckers Product 1401
 +S AV Blackcap May 1407

ANGUS GS
 BW N/A
 ADJ. 205 649

CED	BW	WW	YW	MILK	CW	MARB	RE	\$M	\$W	\$B	\$C
+6	+3.9	+82	+134	+30	+53	+43	+62	+71	+74	+129	+238

• This Jumbo son is high performance. Top 10% WW, 20% YW, and maternal bred. Out of a first calf heifer.

22 **Beckers Colossal 2357**
DOB: 03-21-2023 **Reg. No.:** *20721094 **Bull** **Tattoo:** 2357

BECKERS ANGUS *Musgrave 316 Colossal 137 #*+*LD Capitalist 316
 *BECKERS SUPER COLOSSAL 2136 #*Musgrave Lady Barbara 545
 20129478 #Beckers Royal Lady 1705 #*+*Coleman Charlo 0256
 Beckers Royal Lady A11
 #*A A R Ten X 7008 S A
 #S AV Madame Pride 1134
 #S AV Net Worth 4200
 S AV May 7238

ANGUS GS
 BW 79
 ADJ. 205 677

CED	BW	WW	YW	MILK	CW	MARB	RE	\$M	\$W	\$B	\$C
+11	+1.9	+69	+123	+23	+51	+67	+80	+66	+61	+161	+275

• Here is a young late March bull with a moderate frame that has a lot of things going for him: calving ease with growth. Top WW 35%, YW 35%, maternal top 45% \$M, and carcass qualities with CAB logo. Colossal, bred sire back to an ET SAV cow.

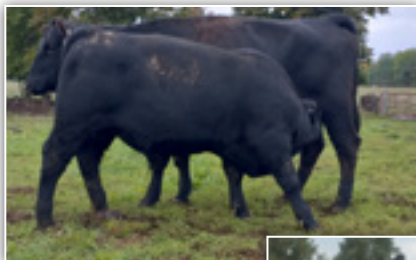
23 **Beckers Colossal 2358**
DOB: 03-27-2023 **Reg. No.:** *20721095 **Bull** **Tattoo:** 2358

BECKERS ANGUS *Musgrave 316 Colossal 137 #*+*LD Capitalist 316
 *BECKERS SUPER COLOSSAL 2136 #*Musgrave Lady Barbara 545
 20129478 #Beckers Royal Lady 1705 #*+*Coleman Charlo 0256
 Beckers Royal Lady A11
 #*Connealy Greeley #*Connealy Confidence 0100
 Precious of Conanqa 0484
 #M A Broadside 1334-822
 SAV Primrose 7861

ANGUS GS
 BW 102
 ADJ. 205 792

CED	BW	WW	YW	MILK	CW	MARB	RE	\$M	\$W	\$B	\$C
+0	+5.8	+86	+138	+23	+55	+62	+67	+76	+67	+142	+260

• He is the youngest bull in the offering. Another Colossal bred bull with performance top 5% WW, 15% YW, and maternal top 20% \$M. He is in the top 5% for Claw and 10% for Angle. His dam is an ET Musgrave Primrose flush sister to bull tag #2354.



Beckers Jumbo 2332 – Lot 20 with his dam.



Beckers Achievement 2313 – Lot 6 with his dam.



Beckers Angelina 2340 – Lot 27

27 Beckers Angelina 2340
DOB: 02-04-2023 **Reg. No:** 20721857 Cow **Tattoo:** 2340

BECKERS ANGUS *Sitz Stellar 726D #*Mohnen Substantial 272
 *SITZ RESILIENT 10208 *SITZ Pride 200B
 19057457 *Sitz Miss Burqess 1856 #*Sitz Top Game 561X
 #+*LD Capitalist 316 #*Connealy Capitalist 028
BECKERS ANGELINA 2012 LD Dixie Erica 2053
 19082076 Beckers Anqelina 1828 Beckers Product 1401
 Beckers Anqelina 1124

CED	BW	WW	YW	MILK	CW	MARB	RE	\$M	\$W	\$B	\$C
+8	-.7	+66	+122	+28	+44	-.88	+.52	+102	+74	+144	+289

- Another nice-looking, balanced heifer from a young cow. Calving ease, performance, maternal strengths top 1% \$M, HP 2%, Claw 10%, Angle 40%, PAP 5%, and HS 32%. A lot of boxes checked on this moderate framed, lower energy calf. She is a Resilient back to a LD Capitalist 316. Doesn't get much better than that for a cow maker.

28 Beckers Rachal 2342
DOB: 02-09-2023 **Reg. No:** *20721874 Cow **Tattoo:** 2342

BECKERS ANGUS *Sitz Stellar 726D #*Mohnen Substantial 272
 *SITZ RESILIENT 10208 *SITZ Pride 200B
 19057457 *Sitz Miss Burqess 1856 #*Sitz Top Game 561X
 #+*PVF Insight 0129 #*S A V Brilliance 8077
BECKERS RACHAL 1812 +*PVF Missie 790
 19097826 #Beckers Rachel C41 Beckers Freedom B 46 9
 Beckers Rachel B 4 7

CED	BW	WW	YW	MILK	CW	MARB	RE	\$M	\$W	\$B	\$C
+2	+3.9	+93	+150	+24	+61	-.21	+.76	+80	+82	+134	+254

- She is a nice looking, powerful, long and deep, high capacity Sitz Resilient heifer with performance. Top 2% WW, 5% YW, and 15% RADG; maternal strengths top 10% \$M, 30% HP. She has "cow" written all over her. Back to an Insight cow. Adj. WW 642, WR 114. Dam production BW 4@94, WW 4@102, YW 2@100.



Beckers Rachal 2342 – Lot 28

24 Beckers Stunner 2345
DOB: 02-11-2023 **Reg. No:** 20721084 Bull **Tattoo:** 2345

BECKERS ANGUS *Musgrave 316 Stunner #+*LD Capitalist 316
BECKERS STUNNER 1901 #MCATL Blackbird 831-1378
 19625390 #Beckers Royal Lady 1705 #+*Coleman Charlo 0256
 Beckers Royal Lady A11
 Beckers Ganite 1617 #*Connealy Black Granite
***BECKERS GEORGINA 1836** +S AV Blackcap May 1407
 19097836 +*Champion Hill Georgina 1509 #*S AV Priority 7283
 +*Champion Hill Georgina 8016

CED	BW	WW	YW	MILK	CW	MARB	RE	\$M	\$W	\$B	\$C
+5	+1.7	+64	+110	+25	+48	+.52	+.72	+81	+66	+145	+269

- Here is a moderate frame and growth, easy doing type Stunner calf back to Georgina cow family.

25 Beckers Stunner 2354
DOB: 03-06-2023 **Reg. No:** 20721092 Bull **Tattoo:** 2354

BECKERS ANGUS *Musgrave 316 Stunner #+*LD Capitalist 316
BECKERS STUNNER 1901 #MCATL Blackbird 831-1378
 19625390 #Beckers Royal Lady 1705 #+*Coleman Charlo 0256
 Beckers Royal Lady A11
 *Connealy Greeley #*Connealy Confidence 0100
+*MUSGRAVE PRIMROSE 1723 Precious of Conanga 0484
 18788930 *MCATL Primrose 1021-7861 #M A Broadside 1334-822
 SAV Primrose 7861

CED	BW	WW	YW	MILK	CW	MARB	RE	\$M	\$W	\$B	\$C
+2	+3.5	+74	+128	+33	+69	+.55	+.89	+59	+70	+174	+285

- A March Stunner calf. Performance top 25% WW and YW, from a Musgrave son out of an ET Primrose cow. Won't get much better when it comes to maternal strength. His dam is a flush sister to bull tag #2358.

26 Beckers Style Plus 2346
DOB: 02-15-2023 **Reg. No:** *20847195 Bull **Tattoo:** 2346A

BECKERS ANGUS +*E&B Plus One #*Connealy Confidence Plus
***BECKERS STYLE PLUS ONE 2110** #+E&B Lady 1023 Precision 936
 20129824 *Beckers Lady 1831 Beckers Opportunity 1604
 Beckers Lady 1601
 *LT Converse 8011 #*Connealy Confidence Plus
***BECKERS JAMIE 2118** #LT Nordica 6066
 20129427 +*Bear Mtn Jamie 1810 *Bear Mtn George W 1069
 +*Bear Mtn Jamie 4101

CED	BW	WW	YW	MILK	CW	MARB	RE	\$M	\$W	\$B	\$C
+12	-.9	+57	+105	+34	+42	+1.02	+.59	+77	+69	+151	+273

- Double-digit calving ease, maternal, and carcass strengths. He is a twin out of a Converse first calf heifer. BW 50 lbs., WW 606 lbs.

Beckers Angus Heifers



Beckers Miss Countess 2330 – Lot 31

31 Beckers Miss Countess 2330
DOB: 01-27-2023 **Reg. No:** 20748750 **Cow** **Tattoo:** 2330

BECKERS ANGUS ***CONNEALY EMERALD** **ANGUS GS**
 19257149 Jace of Conanqa 6571
 #*Connealy Confidence Plus #*Connealy Confidence 0100
 #*Connealy Armory Elbanna of Conanqa 1209
 #*S A V Final Answer 0035 +Jazzy of Conanqa 4660 860C
 #*Connealy Capitalist 028 Prides Pita of Conanqa 8821
BECKERS MISS COUNTESS 2006 #+*Coleman Charlo 0256
 19802071 Beckers Miss Countess 1821 Beckers Miss Countess 1123

CED	BW	WW	YW	MILK	CW	MARB	RE	\$M	\$W	\$B	\$C
+8	+3	+66	+126	+31	+49	+62	+91	+82	+70	+146	+271

- Nice looking calving ease, performance, maternal strengths. Top 10% \$M, 2% in Scrotal EPD, 15% RADG, 1% Claw, 5% Angle, low energy, in a moderate frame. A well-bred and balanced heifer with high capacity. Adj. WW 595, WR 102.

29 Beckers Elba 2321
DOB: 01-21-2023 **Reg. No:** *20748752 **Cow** **Tattoo:** 2321

BECKERS ANGUS ***SITZ RESILIENT 10208** **ANGUS GS**
 19057457 *Sitz Miss Burqess 1856
 #*Connealy Capitalist 028 #*Mohnen Substantial 272
 #*S A V Final Answer 0035 #*SITZ Pride 200B
BECKERS ELBA 1610 #*Sitz Top Game 561X
 18492920 Beckers Elba 1310 Sitz Miss Burqess 4381
 #*Hoover Dam Prides Pita of Conanqa 8821
 Chanhassen Elba of 7031 #*Hoover Dam

CED	BW	WW	YW	MILK	CW	MARB	RE	\$M	\$W	\$B	\$C
+9	-2.2	+52	+86	+41	+26	+61	+16	+89	+72	+101	+220

- Deep, long, and thick calving ease with maternal strengths. Top 3% \$M, topand 1% HP and Milk. This Sitz Resilient heifer should make a good cow. To top it off, she has Connealy Capitalist 028 and Hoover Dam on the bottom side.

32 Beckers Elba 2314
DOB: 01-18-2023 **Reg. No:** *20748754 **Cow** **Tattoo:** 2314

BECKERS ANGUS ***CONNEALY EMERALD** **ANGUS GS**
 19257149 Jace of Conanqa 6571
 #*Hoover Dam #*Connealy Confidence Plus
#BECKERS ELBA 1510 #*Connealy Confidence 0100
 18084044 Chanhassen Elba of 7031 Elbanna of Conanqa 1209
 #*Connealy Armory #*Connealy Armory
 #*SydGen C C & 7 +Jazzy of Conanqa 4660 860C
 #Erica of Ellston C124 #S A F Easy Fortune
 Chanhassen Elba of 5024

CED	BW	WW	YW	MILK	CW	MARB	RE	\$M	\$W	\$B	\$C
+12	-2.3	+45	+83	+28	+30	+1.01	+60	+71	+56	+145	+259

- High capacity, double-digit calving ease with carcass strengths CAB logo. Another four straight generations AI sired calf. Her dam is a nice Hoover Dam. Cow's production WW 6@106, YW 3@108.

30 Beckers Rose 2307
DOB: 01-16-2023 **Reg. No:** 20721063 **Cow** **Tattoo:** 2307

BECKERS ANGUS ***SITZ ACCOMPLISHMENT 720F** **ANGUS GS**
 19078208 Sitz Barbaramere Nell 166D
 #*Sitz Upward 307R Poss Lasting Impact 3118
BECKERS ROSE 1419 *Poss Erica 327
 17792758 Beckers Rose A 5 5 #+*S A V Resource 1441
 #*Connealy Onward Sitz Barbaramere Nell 14Y
 #*Sitz Henrietta Pride 81M #*Connealy Onward
 #Vermilion Dateline 7078 #*Hoover Dam
 Eddys Rose Effie 4501

CED	BW	WW	YW	MILK	CW	MARB	RE	\$M	\$W	\$B	\$C
+5	+2.0	+71	+121	+22	+51	+21	+64	+62	+60	+113	+209

- Performance and maternal strengths, this nice-looking, long, deep, well-balanced heifer has four in a row generations of AI sires with Sitz Accomplishment back to Upward. Should make a nice cow! Adj. WW 634 lbs., WR 109. Dam's production BW 6@97, WW 6@101.

33 Beckers Lou Ann 2323
DOB: 01-22-2023 **Reg. No:** *20721072 **Cow** **Tattoo:** 2323

BECKERS ANGUS ***CONNEALY EMERALD** **ANGUS GS**
 19257149 Jace of Conanqa 6571
 #*HA Cowboy Up 5405 #*Connealy Confidence Plus
BECKERS LUO ANN 1820 #*Connealy Confidence 0100
 19097828 Beckers Luo Ann 1205 Elbanna of Conanqa 1209
 #*Connealy Armory #*Connealy Armory
 #*HA Outside 3008 +Jazzy of Conanqa 4660 860C
 #*S A V Iron Mountain 8066 #*HA Blackcap Lady 1602
 Beckers Lou Ann C50 6

CED	BW	WW	YW	MILK	CW	MARB	RE	\$M	\$W	\$B	\$C
-1	+4.3	+100	+168	+9	+52	+69	+66	+58	+66	+145	+246

- This is a clean-fronted, long-spined, deep-bodied powerhouse of a heifer. Performance in the top 1% for WW and YW, maternal strengths, top 5% for Average Daily Gain. Adj. WW 632 lbs., WR 109. From a good Cowboy Up dam. Production BW 4@100, WW 4@104, YW 2@103.



Beckers Rose 2307 – Lot 30



Beckers Lou Annual 2323 – Lot 33

34 Beckers Eba 2319
DOB: 02-20-2023 **Reg. No:** 20721069 Cow **Tattoo:** 2319

BECKERS ANGUS *Musgrave 316 Colossal 137 #+*LD Capitalist 316
MUSGRAVE JUMBO 19436794 Musgrave MO Barbara 947 #*Musgrave Lady Barbara 545
 #Bruns Blaster
 Musgrave MO Barbara 644-487
 +*Beckers Granite 1721 #*Connealy Black Granite
 +MCATL Blackcap 070-4132
 SAR BIS Alliance 102
 Beckers Elba 1208

ANGUS GS
 Powered by *Hygen Genetics*

CED	BW	WW	YW	MILK	CW	MARB	RE	\$M	\$W	\$B	\$C
+14	-.6	+64	+106	+17	+43	+29	+44	+63	+57	+116	+213

- Nice Jumbo heifer with double-digit calving ease and moderate growth. Adj. WW 609 lbs., WR 105.

35 Beckers Jamie 2347
DOB: 02-17-2023 **Reg. No:** 20721085 Cow **Tattoo:** 2347

BECKERS ANGUS *Musgrave 316 Stunner #+*LD Capitalist 316
BECKERS STUNNER 1901 19625390 #Beckers Royal Lady 1705 #MCATL Blackbird 831-1378
 #+*Coleman Charlo 0256
 Beckers Royal Lady A11
 #*HA Cowboy Up 5405
 Beckers Elba 1501
 *Bear Mtn George W 1069
 +*Bear Mtn Jamie 4101

ANGUS GS
 Powered by *Hygen Genetics*

CED	BW	WW	YW	MILK	CW	MARB	RE	\$M	\$W	\$B	\$C
+9	-1.1	+44	+80	+29	+21	+46	+37	+71	+54	+99	+199

- Moderate frame, easy-keeping type, low energy, calving ease, and maternal strengths. Out of a young cow.

36 Beckers Lou Ann 2350
DOB: 02-23-2023 **Reg. No:** 20721088 Cow **Tattoo:** 2350

BECKERS ANGUS *Musgrave 316 Stunner #+*LD Capitalist 316
BECKERS STUNNER 1901 19625390 #Beckers Royal Lady 1705 #MCATL Blackbird 831-1378
 #+*Coleman Charlo 0256
 Beckers Royal Lady A11
 #+*PVF Insight 0129
 Beckers Lou Ann 1326
 Beckers Freedom 1219
 Beckers Lou Ann 11

ANGUS GS
 Powered by *Hygen Genetics*

CED	BW	WW	YW	MILK	CW	MARB	RE	\$M	\$W	\$B	\$C
+10	+4	+73	+122	+26	+58	+51	+51	+72	+77	+145	+260

- Calving ease, performance top 25% WW, 30%YW, maternal strength top 30% \$M, in a lower energy, moderate, deep, and thick package. These Beckers Stunner 1901 daughters make nice cows.

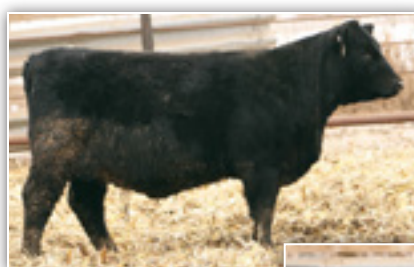
37 Beckers Elba 2355
DOB: 03-11-2023 **Reg. No:** 20721093 Cow **Tattoo:** 2355

BECKERS ANGUS *Musgrave 316 Stunner #+*LD Capitalist 316
BECKERS STUNNER 1901 19625390 #Beckers Royal Lady 1705 #MCATL Blackbird 831-1378
 #+*Coleman Charlo 0256
 Beckers Royal Lady A11
 #*SydGen C C & 7
 #Erica of Ellston C124
 #+*Coleman Charlo 0256
 Beckers Elba 1610

ANGUS GS
 Powered by *Hygen Genetics*

CED	BW	WW	YW	MILK	CW	MARB	RE	\$M	\$W	\$B	\$C
+10	+6	+60	+102	+30	+51	+39	+72	+78	+69	+141	+261

- This young heifer has calving ease, maternal strengths top 15% \$M, Claw 1%, Angle 35%, DMI 10%, and Scrotal 10% EPD. In a low energy, moderate frame. Another good cow prospect with 1901 back to Hoover Dam to Charlo.



Beckers Erica 2351
 - Lot 38



Beckers May 2353
 - Lot 39

38 Beckers Erica 2351
DOB: 02-26-2023 **Reg. No:** 20721089 Cow **Tattoo:** 2351

BECKERS ANGUS *Musgrave 316 Stunner #+*LD Capitalist 316
BECKERS STUNNER 1901 19625390 #Beckers Royal Lady 1705 #MCATL Blackbird 831-1378
 #+*Coleman Charlo 0256
 Beckers Royal Lady A11
 #+*Coleman Charlo 0256
 *S AV Blackcap May 4136
 #+S AV Bismarck 5682
 +S AV Erica 4419

ANGUS GS
 Powered by *Hygen Genetics*

CED	BW	WW	YW	MILK	CW	MARB	RE	\$M	\$W	\$B	\$C
+7	+1.5	+61	+106	+31	+50	+46	+68	+44	+63	+143	+229

- She is a balanced and thick lower-energy type, and should make a heck of a cow. From Beckers Stunner 1901 combined with ET bred SAV Erica, who goes back 7 straight generations of AI sires, which go back to the 70s.

39 Beckers May 2353
DOB: 03-02-2023 **Reg. No:** 20721091 Cow **Tattoo:** 2353

BECKERS ANGUS *Musgrave 316 Stunner #+*LD Capitalist 316
BECKERS STUNNER 1901 19625390 #Beckers Royal Lady 1705 #MCATL Blackbird 831-1378
 #+*Coleman Charlo 0256
 Beckers Royal Lady A11
 #+*Coleman Charlo 0256
 *S AV Blackcap May 4136
 #+*S AV Seedstock 4838
 #+S AV Blackcap May 5530

ANGUS GS
 Powered by *Hygen Genetics*

CED	BW	WW	YW	MILK	CW	MARB	RE	\$M	\$W	\$B	\$C
+1	+4.1	+77	+135	+21	+67	+38	+87	+50	+60	+164	+263

- She has capacity and muscle, moderate frame, and low energy. In the top 15% for WW and YW, 10% RADG, 1% Claw, 30% Angle, 10% Scrotal EPD. Another great cow prospect with 1901 on the top and the famous SAV May cow family on the bottom, to which this ET May cow is double bred. Has 6 straight generations of AI sires to her pedigree.

40 Beckers Rose 2359
DOB: 03-28-2023 **Reg. No:** 20721096 Cow **Tattoo:** 2359

BECKERS ANGUS *Musgrave 316 Stunner #+*LD Capitalist 316
BECKERS STUNNER 1901 19625390 #Beckers Royal Lady 1705 #MCATL Blackbird 831-1378
 #+*Coleman Charlo 0256
 Beckers Royal Lady A11
 #*SydGen C C & 7
 #Erica of Ellston C124
 #*Connealy Capitalist 028
 Beckers Rose 1419

ANGUS GS
 Powered by *Hygen Genetics*

CED	BW	WW	YW	MILK	CW	MARB	RE	\$M	\$W	\$B	\$C
+10	+6	+60	+102	+25	+48	+52	+82	+65	+63	+145	+253

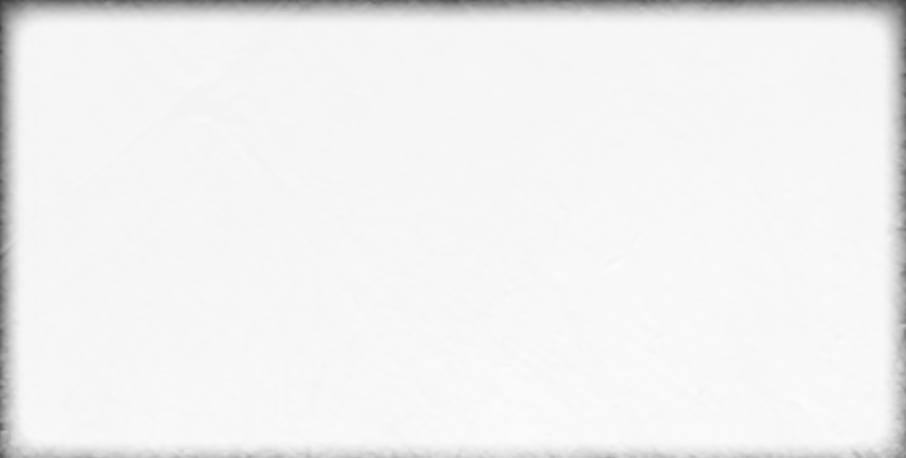
- She is the youngest female in the offering. Another good cow prospect with calving ease and maternal. She is thick and deep body, moderate frame, low energy. With Beckers Stunner 1901 on top and Hoover Dam on bottom, she is a 3/4 sister to Elba 2355.



AMERICAN ANGUS HALL OF FAME
at the WORLD ANGUS HEADQUARTERS
Box 660, Smithville, MO 64089-0660.
Phone: (816) 532-0811
Fax: (816) 532-0851
E-mail angushall@angushall.com
www.angushall.com

PRSR
FIRST-CLASS
U.S. POSTAGE
PAID
St. Joseph, MO
Permit #2017

Sale Managers
TOM BURKE, KURT SCHAFF, ALEX POPPLEWELL



Deer Valley Growth Fund



Musgrave Jumbo



Sitz Resilient 10208

Featured Sires



Sitz Accomplishment 720F



Connealy Emerald



Ellingson Rangeland